



# His Faithful Followers

A publication of Rush United Methodist Church

July 2024

## A Note from Pastor Kyle

Kristina (Kris) and I have lived an incredible life and as we look forward - the best is yet to come. We met at the University of Texas, Austin in 1994 and have been together ever since. We are so excited to join the community at Rush United Methodist Church as well as the greater Rochester, NY area. Without a doubt we are arriving at the right place, at the right time, and look forward to future. God has called us for this very moment.



By the time this is published we will have smiled at many if not all your lovely faces and told a number of stories. I am confident I will have said more than "too many" dad jokes. Thank you for allowing us to start the process of becoming members of your family.

If you will allow me, I would like to trace a bit of the path that brought us to you. After graduating from UT, I went to Seminary and Kris began teaching. From there I graduated and began ministry in the United Methodist Church. Our first church was Jourdanton United Methodist Church in Jourdanton, TX (30 minutes due south of San Antonio). This was the first of 11 moves over the next 27 years. The first two moves (6.5 years) were from one church to another - then I decided to join the Air Force. John Wesley once stated that the World was his parish... joining the Air Force allowed me to understand that phrase in a special way. Eight bases later, in February of 2024 I retired from the Air Force after a distinguished career. And God blessed us again; I was able to serve a beautiful congregation in Seadrift, TX while waiting for this conference year to begin. And now, we call Rush UMC home. Thank you.

I have been blessed with an amazing wife and three fantastic children. They have had to follow me everywhere the Air Force has sent us. Each time we moved, they had to start over... I just got to keep being a chaplain. I have been so blessed; they are God sent. Kris is now an

Assistant Principal for an On-line school district in Texas and is blessed to continue that job even though she has relocated. However, this was not always the case. Most moves we made required her to resign from one position and search for a job in a new state; usually having to secure new and additional credentials. This never seemed to be an issue. She is truly my better half - twice as smart as me and loved by all she meets.

Our three children are now all out of the house. Our oldest (Joshua) is soon to be married to his high school sweetheart Jenny. They live in Irvine, California and both work for a start-up company, inventing a bio-monitor for prematurely born children who require NICU care. Our middle son (Luke) is about to start his final year at UC Davis and will be earning a Mechanical Engineering Degree. Our youngest (Kayla) is soon to start their 3<sup>rd</sup> year at Cal State Chico and will be getting a BFA in Musical Theater. I could not be prouder of them all.

I hope that gives you some insight into me and my family. I want to leave you with a nugget I learned from my time in the AF. The most recent directive from the Chief of Chaplains was to "Love Airmen more than anyone thinks is humanly possible!" Could you imagine that as a mission statement or directive? But this is our goal for our time at Rush UMC, to love you more than you think is humanly possible.

God's Blessing as we begin our time together.

Pastor Kyle



### Inside this issue:

Page 2: Welcoming Pastor Kyle and Kris; Ladies Lunch Bunch; Church Fellowship Second Sunday Brunch, Welcome Pastor Kyle and Kris; Turkey Dinner Info. Meeting; Board of Trustees; PromiseLand Golfer Tournament; Shipwrecked Vacation Bible School	Page 4: Mission and Outreach News; Prayer Update and Thank You
Page 3: July Family Fun Community Picnic; Back-to-School Super Sale; Choir Update; Sunday School Teachers for Fall; High School Graduates; Thank You Outdoor Workers	Page 5: Financial Update; Roof Replacement Loan Update; Capital Stewardship Fund Update
	Page 6: Prayer Concerns; Bereavement; Praises
	Pages 7 and 8: June Activity Photos
	Page 9: Red Bird Mission Shoeboxes; Leadership Ministry Team; Mission/Vision/Priority Statements
	Back Page: Summer Sunday Schedule; Youth Group Summer Activities; Leadership Ministry Team; How to Reach Us



WELCOME OUR NEW PASTOR!

## Welcoming Pastor Kyle

The Rev. Kyle Roehrig officially begins his appointment here at Rush UMC on July 1. We look forward to welcoming him and his wife Kris! Pastor Kyle's first Sunday preaching at the church will be Sunday, July 7, and we will hold an informal reception for him and his wife during coffee time, following the service. A more "formal" welcome meal will be held as part of our Second Sunday Brunch, on Sunday, July 14. Everyone is welcome and encouraged to join us at one or both of these events!

To help Pastor Kyle and his wife learn names, we will be wearing nametags for the next few months. I also encourage everyone to bring a picture for our family bulletin board in the Fellowship Hall. If you do not have a recent picture, there are volunteers who will be happy to take your picture at church on Sunday morning.

If you would like to be part of the planning for any of our "Welcome Kyle" events, please contact Cindy or George Gray at [cgtgray1039@gmail.com](mailto:cgtgray1039@gmail.com).



## Ladies' Lunch Bunch

The Ladies' Lunch Bunch is a time of fellowship for women in our church community who are single, widowed, divorced, or separated – or who just may want an opportunity for a good meal and conversation! They meet the first Monday of each month, at 12:30pm, in the church Fellowship Hall. The next month's luncheon is scheduled for Monday, July 8.

If you would like to join us for lunch this month, please let Barb Kingsley, or Cindy Gray know. This will be Pastor Kyle's first lunch opportunity with the group, so please come and welcome him to Rush Church!

Reservations are not required, but it's helpful to have a rough idea of how many are coming, so we know how much food to prepare. If you would like to know more about this opportunity, please call Cindy Gray at 585-362-6206 or contact her at [cgtgray1039@gmail.com](mailto:cgtgray1039@gmail.com)



## Church Fellowship Second Sunday Brunch

On Sunday, July 14, enjoy a cup of coffee, a cookie and conversation then stay for our Second Sunday Brunch. Serving begins around 11.

Enjoy a meal without having to fix it yourself, meet families you haven't met before and get to know others better. This will be an opportunity to meet Pastor Kyle and his wife, Kris. A per adult donation of \$1 or \$2 is appreciated but not necessary. Offered are child-friendly options.



## 80th Annual RUMC Turkey Dinner

Mark your calendars for the 80th Rush United Methodist Church Turkey Dinner to benefit RHAFT. It will be held on Saturday, October 19th at the church. We will be holding interest/input meetings in the coming weeks, so please keep an eye out for Rush Tidings and newsletter announcements. The first of these meetings is Sunday, July 14 during the Second Sunday Brunch.



## Board of Trustees

Our Rush Church building is 28 years old, and there is always an ongoing list of maintenance jobs to do, both big and small. Some of these include lawn mowing, gardening, painting, and "fix-it" odd jobs. If you are interested in learning how you can help keep our church building strong, safe, secure, and attractive; or if you would like to become a part of the planning team for this important committee, please contact Cindy Gray ([cgtgray1039@gmail.com](mailto:cgtgray1039@gmail.com)) or Geoff Furman ([furman@rochester.rr.com](mailto:furman@rochester.rr.com)). We meet monthly at the church, and our July meeting is scheduled for Monday, July 15, at 7:00pm.



## PromiseLand Golf Tournament

The PromiseLand Golf Tournament is on July 21 at Wildwood Country Club. We are still accepting donations of raffle prizes and registration. Feel free to drop off any donations at the church.



## Vacation Bible School

Plans are underway for our VBS, Shipwrecked, to start July 26-27. Parents can register kids ages 5 – grade 5 by filling out a paper form in the lobby and placing in my mailbox or going online at [rushumc.com/vbs](http://rushumc.com/vbs). The numbers of kids will determine how many volunteers are needed so it's important we get a good head count as soon as we can. We will be serving lunch both days, so help is always appreciated in that area. I am also planning a decorate the sanctuary day on Saturday, July 20 starting at 10:00am. Please show up or let me know if you help!



Thank you,

Alethea Coulter  
Children's Ministry Director  
[Alethea.coulter@rushumc.org](mailto:Alethea.coulter@rushumc.org)

## Family Fun Community Picnic!

Our summer community picnics continue, with the next one scheduled for Wednesday, July 31, at 5:30pm. Mark your calendars now. This is always a wonderful time of good food and fellowship in our church pavilion. Hot dogs, baked beans, chips, and tableware are provided, and we will have lemonade and water available to drink. You are invited (but not required!) to bring a dish to share: salad, side dish, or dessert.

Everyone is welcome, so tell your friends and neighbors to come, picnic with us, and enjoy the fellowship.



## Back to School Super Sale

We are planning to have a Back-to-School Super Sale, Saturday, August 10, 9am-3pm. A half-price sale will be from 1-3pm. Per usual, we need your help to make this happen. Volunteer sign-up sheets are on Eagle Island in the lobby. Please sign up at your earliest convenience so we can determine if we will have enough helpers.

Currently, the sale room needs housewares, games, puzzles, books, and small appliances. If you have any quality items you would like to donate, we will be accepting items until Wednesday, July 24. Clothing can be put in the St. Pauly shed anytime.



**Super Sale**

Thank you,  
Cindy Raymond

## Choir Update

Thank you to our dedicated choir for all of your work over the last year. You bring such joy to worship and each of you is a blessing. Enjoy the summer break!

The choir will start back up on September 4. This is a great opportunity for anyone who enjoys singing and we would love to have some new members! We sing most Sunday mornings and 2 Cantatas each year. Our rehearsals will be on Wednesdays at 6:30 pm and on Sunday mornings at 8:30am before the service. If you have any questions, please contact Kellianne Williams at [klkw1212@gmail.com](mailto:klkw1212@gmail.com) or (585) 507-1996. I look forward to beginning this new season with you all!



## Sunday School Teachers for Fall

We have a mixed age group of kids for our one room Sunday school class. Ages can vary greatly, and I'd like to have the ability to split the group on occasion. I have a dedicated group of Sunday school teachers who rotate Sundays to teach but there aren't enough of them to make splitting this group possible. If you are interested in working with children or youth and joining us in this ministry, please let me know. There will be another Safe Sanctuary class in the fall and we can get you right in!



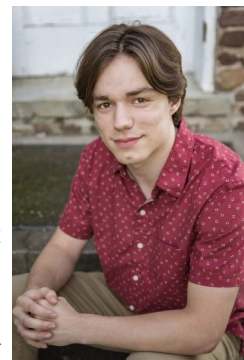
Thanks,

Alethea Coulter  
Children's Ministry Director  
[Alethea.coulter@rushumc.org](mailto:Alethea.coulter@rushumc.org)

## High School and College Graduates

From Rush Henrietta Central School District:

Eli Hunt, also the recipient of the Rush United Methodist Church High School Senior Scholarship



From SUNY Brockport

Anthony Gonzalez, graduated with BS in Biochemistry; is gainfully employed in his field



## Thank You to our Church Outdoor Workers!

We are grateful to all the volunteers who help with the various gardens and lawn maintenance issues on our church property. However, this is not a one-day issue – grass and weeds grow by the minute, and volunteers are regularly needed to mow, trim, and weed.

If you would like to join our dedicated group of lawn mowers, please contact Geoff Furman and he will be happy to get you started. Training can be provided! If you like gardening, a small group of us meet Wednesday evenings at 6:00pm and pull weeds or do whatever needs doing. If you would like to help with gardening, either drop in on Wednesday evening, or contact Cindy Gray. No experience necessary!



## Mission and Outreach News

After each visit to South Africa, I am acutely aware of the vast difference in our quality of life compared to so many of our sisters and brothers around the world. We visited three women in their early 40s who are terminally ill from cervical cancer.



On my return home, I visited my three hospice patients as a volunteer. Each has expressed the wish to die, discouraged and disheartened by the inability to care for themselves, to be

free of discomfort, to be productive.

How can we narrow this gap between those dying well before they reach “three score and ten” and the thousands of our elders living far longer than they wish? I remember my mother crying, “Get me out of this bed! I want to go to heaven!”

Our efforts do make a difference for Zululand Hospice Association (ZHA) and Musa



weNkosi and I am immensely grateful for all who support these efforts. The response to the wheels being taken from the Children’s Home’s vehicle was amazing. \$5,888 was wired which will cover half the cost of a new vehicle,

badly needed as their 16 and 30 year old vehicles died recently. I witness the satisfaction of the ZHA staff when they have cortisone cream, blue gel, panodol (their word for acetaminophen) and wound care dressings when needed. They distribute food donated by Woolworths every week.

The huge difference in the healthcare available to us, but not to so many is of great concern. What more can we do?

An article in the Summer issue of Plough magazine by Dr. Matthew Loftus, a missionary doctor in Africa, addresses this issue. He writes, “In an ideal world, we would use it up, wear it out, make do or live without...



Somehow, we would find a way to take all the money that gets wasted on unnecessary MRIs in America and give it to my patients in Africa so that forty-year-old mothers don’t die of cervical cancer.” In the US, cervical cancer makes up 0.7% of all cancer deaths.



Dr. Loftus wrote of receiving boxes and boxes of ball bearings for artificial joints crucial for joint replacement operations. His hospital exclusively delivers babies and cares for sick children. “One of these boxes somehow got opened and some of the children from a nearby orphanage took to playing with thousands of dollars’ worth of titanium in the red dust of the football pitch.”

He recommends our approach should be “to cultivate a sense of gratitude, to count the cost, and to give until it hurts.”

“When what you have is a gift, you feel less inclined to hold on to that excess for yourself.”

“I think that when it comes to managing your resources, you should give until it hurts at least a little. God wants your heart more than he wants your wealth, but excess wealth is like too much plastic packaging wrapped around your heart.”

“The abundance generated by technology will always try to tempt you if you can’t restrain it. Rather, be grateful for the excess and put it to good use, for there are many who need it. But for heaven’s sake, please check with us first before you ship it to Africa.”

These comments affirm our support of the South Africa missions. We are supporting workers “on the ground,” learning what they need and responding when a crisis develops.

“Happy are generous people, because they give some of their food to the poor.” Proverbs 22:9

Erma Mae Perkins,  
Lay Leader, Missions and Outreach  
[ermaperkins@me.com](mailto:ermaperkins@me.com)



## Prayer Update and Thank You

Hello everyone,

I just want to thank everyone for your heartfelt prayers, lovely cards, kind notes, caring telephone calls and those that supplied a meal for the Smith family. Ray’s stroke certainly rocked our world on 4/9 spending time in Strong Hospital’s ICU on a feeding tube following a craniotomy.

Ray spent a month in the beautiful new Brain Injury Unit receiving daily PT, OT & Speech therapies. Ray was discharged on 5/20 and came home. We have adjusted and we are taking a day at a time. He is physically strong, but speech and cognition will take months of work and healing. We attend speech therapy a few times a week, take walks, go on outings, Wegmans, etc, but healing will be a long journey.

We have been blessed that our 2 daughter’s, Michelle & Claire took 12 weeks of family leave from their jobs,

which we are thankful for.

During this healing process, Ray knows his limits and knows when he has had too much stimulation.

We plan to return to church at some point and please understand conversation will be difficult. Each day a new word or phrase.

Please pray for my clarity and patience on a daily basis as a caregiver. I have had to give up so much, but my life will take a different direction with God’s guidance and all of your love.

Blessings to all,

Joyce Smith



# Rush United Methodist Church

## Analysis of Revenues & Expenses: General Budget

May 2024

Accounts	MTD Actual (This Year)	YTD Actual (This Year)	Budget TD (This Year)
<b>Revenues</b>			
Other Income/ Parsonage	\$8,262.62	\$19,492.73	\$9,291.65
Offerings	\$9,370.00	\$78,475.75	\$81,477.00
P/L & HCS Reimbursement	\$1,624.69	\$7,671.33	\$7,395.80
Carry Over from 2023	\$5,797.50	\$28,987.50	\$28,987.50
<b>Total Revenues</b>	<b>\$25,054.81</b>	<b>\$134,627.31</b>	<b>\$126,493.46</b>
<b>Expenses</b>			
Board of Trustees	\$3,358.89	\$30,423.73	\$19,791.70
Education	\$0.00	\$188.13	\$566.65
Insurance	\$0.00	\$4,509.14	\$3,355.17
(1) Mission	\$0.00	\$0.00	\$0.00
Office Expenses	\$838.10	\$6,646.15	\$6,593.15
Clergy Salaries	\$7,474.86	\$27,407.82	\$27,407.77
Lay Salaries	\$10,211.62	\$37,884.97	\$35,886.35
Clergy Benefits	\$4,556.89	\$22,349.25	\$22,521.97
Ministry Team	\$855.17	\$2,184.48	\$2,395.80
Other Program Expenses	\$107.32	\$688.61	\$2,874.65
Utilities	\$2,870.20	\$15,042.71	\$10,215.35
PromiseLand	\$5000.00	\$0.00	\$0.00
<b>Total Expenses</b>	<b>\$35,273.05</b>	<b>\$147,325.43</b>	<b>\$131,608.56</b>
<b>Net Total</b>	<b>(\$10,218.24)</b>	<b>(\$12,698.12)</b>	<b>(\$5,115.10)</b>

1. Shared Ministries: \$0.00 paid to end of June

### Capital Reserve Fund

Balance as of June 27, 2024:  
\$52,292.89

### Building Contingency Fund

Balance as of June 27, 2024:  
\$5,082.46



## Roof Replacement Loan Repayment

	Date Paid	Amount Paid	Balance
Opening Balance			\$31,892.10
Interest at 3.25%			\$1,036.49
Loan plus Interest			\$32,928.59
Payment #37	01/20/2024	\$250.00	\$32,678.59
Payment #38	02/15/2024	\$250.00	\$32,428.59
Payment #39	03/13/2024	\$250.00	\$32,177.59
Payment #40	04/15/2024	\$250.00	\$31,928.59
Payment #41	05/15/2024	\$250.00	\$31,678.59
Payment #42	06/15/2024	\$250.00	\$31,428.59
Payment #43			
Payment #44			
Payment #45			
Payment #46			
Payment #47			
Payment #48			
Year End Payment from additional donations			
	Total Paid	\$1,500.00	



## Capital Stewardship Campaign Update

As of Wednesday, June 26, we have received \$269,200.00 or 53.84% in pledges towards our \$500,000.00 goal. Of the amount pledged, we have received \$150,619.21 of which \$22,716.23 has been spent on fabric to reupholster the sanctuary chairs, for the materials and installation of the carpet and baseboard in the lobby, sitting area and halls and for repairs to gutters. Six thousand one hundred twenty (\$6,120.00), not pledged, of this total has been designated for an electronic sign. Pledges continue to be accepted. Even if you haven't made a pledge, donations to the Capital Stewardship Campaign are gratefully accepted.



## *Prayer Concerns*

Jonathan Haines, Bill Pegg's grandson, health concerns  
 Raymer Ottman, cancer treatment, miraculous healing  
 Pastor Kyle and Kris as they come to Rush UMC  
 Joyce Smith, prayers for strength and adjustment to new directions in life  
 Ray Smith, continued recovery from his stroke  
 Pat Weaver, health concerns, at home  
 Those in our congregation who are suffering with loss, illness, or deteriorating health  
 Allison, health and strength  
 Aggressive diplomacy that will lead to peace and justice for Palestinians and Israelis  
 Israel and the conflicts around the world  
 The Jewish people  
 Difficult marriages  
 PromiseLand Childcare  
 School Districts, Parents and Students  
 Families and friends of those affected by continued gun violence and mass shootings  
 Friends and members to return to in person worship at Rush UMC  
 Those struggling with addiction and alcoholism  
 Peace to come to our troubled land  
 Government Leaders  
 For justice and health care to be deployed equally and evenly among all people  
 End to racism and inequality  
 Musa weNkosi Orphanage and Zululand Hospice  
 Our Bishop and Clergy and Lay leaders  
 Hospice Houses near and far  
 RHAFT and FISH  
 A Meal & More Soup Kitchen and homeless served by them  
 Staff and Young Men at State School at Industry  
 Small Businesses  
 Hospital and Nursing Home Staff – stay healthy and strong to tend to the needs of patients and residents  
 Help us all to remember that in these times as always Jesus is with us, we're not alone  
 Prayers for our youth to find themselves and God in the process  
 Families affected by Alzheimer's, cancer and other terminal illnesses  
 Parents of New Drivers  
 Those looking for employment  
 Employers looking for people to hire  
 Super Sale now and future  
 Our homebound and ill  
 Elderly parents, youth, teens, young adults, those suffering from chronic pain, mental health problems depression and addiction  
 Our children, youth and church family  
 For all marriages and families  
 Violence in places of Worship  
 Campus Ministries  
 All Volunteers who go on Missions  
 UMCOR  
 Refugee resettlement project and resettlement families  
 Injustice in the USA  
 City of Rochester  
 RCSD and Board  
 International Students  
 Members in Military  
 Those who are incarcerated

People with disabilities, anxiety disorders, and depression  
 For people to get along and not be so divided in America!!  
 Colleges around the country

Those among our family who are homebound or in senior living facilities:

Ruth Baldoni	Jean and Walt Banker
Mary Anne Brice	Mary Callerame
Ernie Harrington	Jim Hughes
Lynne Jacobs	Kevin Kinnally
Bessie Luft	Hubert Koloseike
Gisela Rice	Dave Smith
Betty Stover	

Members of our armed forces and reserves, especially those associated with our church family:

Phillip Banker	Jason Bello
Ben Frederick	Jason McKnight
Isaiah Montana	Sgt. Joseph Sarmiento
Bryan Simpson	Matthew Simpson
Marcus Sydow	

Please help the church staff keep the prayer list current by informing us of any changes.



### *Bereavement*

Alethea Coulter, death of her best friend's mother  
 Geoffrey Furman,  
 Alethea Coulter and family, death of Geoffrey's mother  
 Family and friends of Louise Harris who passed on  
 Wednesday, June 5



### *Praises*

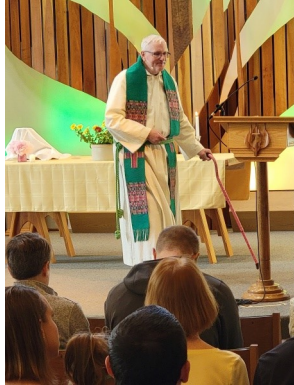
Joyful Retirement Picnic for Pastor Todd on Sunday, June 9  
 Robert and Barbara Weiler, 70th anniversary on June 12  
 July Birthdays and Anniversaries



**PRAISE**



*Pastor Todd's Last Sundays*



*Memorial Service for Louise B. Harris*



*Pastor Kyle and Kris*



# *June Second Sunday Brunch and Retirement Picnic for Pastor Todd*



## *June Community Picnic*

We ate indoors by candlelight because of a thunder storm and the power went out just before the picnic started!





## Red Bird Mission

The Mission team of Endwell United Methodist Church is again coordinating the collection and delivery of shoeboxes for the Red Bird Mission, located in Beverly, Kentucky. The Red Bird Missionary Conference (renamed Central Appalachian Missionary Conference in November, 2022) is one of three United Methodist missionary conferences in the United States. It is the most comprehensive mission effort of the United Methodist Church, providing outreach and services that minister to the whole person-spiritual, physical, and economic.

In December of 2023, five volunteers drove two 26-foot trucks and a van to the mission in Kentucky. They transported over 2,800 shoeboxes, over 100 new sheet sets and bedspreads, as well as numerous books, school supplies, and cleaning supplies.

Our goal for 2024 is to transport at least 3,500 shoeboxes and other supplies to the Red Bird Mission the first week of December.

There are two different styles of shoeboxes – adults and children. Items needed for adult shoeboxes include a comb or brush, shampoo, hand lotion, deodorant, a toothbrush, toothpaste, ChapStick. A full-size bar of soap, disposable razors, shaving cream, nail care supplies, socks, a pair of work gloves or mittens, and a winter hat or scarf.

Items needed for children's shoeboxes include two or three small toys, two or three items needed for school, a comb or brush, shampoo, hand lotion, a child's toothbrush and toothpaste, ChapStick, a bar of soap, a washcloth, a small flashlight, socks, a pair of mittens and a winter hat.

Christian bookmarks, wristbands, and other spiritual items are also appreciated.

The Red Bird Mission would like the items put in clear plastic shoebox-sized storage containers with locking lids. These provide additional needed storage space. If you are unable to purchase plastic boxes, the same-size cardboard boxes will work. Please do not wrap the

shoeboxes or cardboard boxes. Also, it is helpful to the Mission if you clearly label each shoebox, so they know who the intended recipient is for the items.

Shipping labels will be available in the church lobby along with the boxes. The idea for the labels came from First United Methodist Church of Greenbush.

The Mission also needs new pillows, new sheet sets, and new blankets for full and twin-size beds, as well as new bath towels. Used sheets, blankets, and towels cannot be sent.

Books, school supplies, new backpacks and cleaning supplies are needed, as well.

Donations of money can be made payable to the Endwell United Methodist Church to help cover the cost of the truck rental, fuel, and lodging and meals for the volunteers who will be delivering the shoeboxes and other donations to the Red Bird Mission the first week in December. All funds will be deposited into a dedicated account for this mission. A suggested donation is \$1.50 per shoebox. Please do not put money inside the shoeboxes. Place the money in an envelope and attach it to the outside of the shoebox.

Rush UMC will be a drop-off site for shoeboxes.

Please consider being a part of this vital mission. You can learn more about the mission by going to [EndwellUMC.org](http://EndwellUMC.org) and clicking on Missions. If you have questions, please contact Dave Alexander at 607-743-8955 or Endwell United Methodist Church at 607-754-5735.

Blessings,

Dave Alexander, Coordinator



### Leadership Ministry Team Contact Information

Kelly Barrett	<a href="mailto:kjbarrett92@gmail.com">kjbarrett92@gmail.com</a>
Jan Funkhauser	<a href="mailto:jsquaredf@aol.com">jsquaredf@aol.com</a>
Geoffrey Furman	<a href="mailto:furman@rochester.rr.com">furman@rochester.rr.com</a>
Cindy Gray	<a href="mailto:cgtgray1039@gmail.com">cgtgray1039@gmail.com</a>
Dan Kingsley	<a href="mailto:deltakilo@gmail.com">deltakilo@gmail.com</a>
Michelle Prok	<a href="mailto:mibopbuckeye@gmail.com">mibopbuckeye@gmail.com</a>
Lisa Shingleton	<a href="mailto:homeforsale51@gmail.com">homeforsale51@gmail.com</a>
Steve Williams	<a href="mailto:williasc@gmail.com">williasc@gmail.com</a>



### The mission of the Rush United Methodist Church is "to live and share the love of Jesus."

**Our vision** is "to be more like Jesus."

**Our missional priorities** are "excellence in worship; ministries for children, youth, adults and families; and mission and outreach"

### OUR MISSION, VISION and



### PRIORITY STATEMENTS

RUSH UNITED METHODIST CHURCH  
 6200 RUSH LIMA ROAD  
 PO BOX 49  
 RUSH NY 14543-0049



**Summer Sunday Worship Schedule**

9:30AM — Blended Worship Experience - In-Person and on YouTube and Facebook; 2nd and 4th Sundays  
 Communion  
 10:45AM — Rush UMC Coffee Hour  
 10:45AM — Adult Class: “Resist Chaos by Anchoring Yourself in God’s Truth”



**Sunday Schedule**

**How to Reach Us**

Church Telephone: 585-533-2170  
 Church Fax: 585-533-1978  
 Pastor Kyle Telephone: 585-533-2170  
 PromiseLand Telephone: 585-533-2475  
 Web Site: www.rushumc.com  
 Email Address: rushumc@rochester.rr.com  
 Rush Tidings Address: rushumcnews@rochester.rr.com



Ministers: ..... Every Member of the Congregation  
 Pastor:..... Rev. Kyle Roehrig  
 Administrative Assistant: ..... Barbara Kingsley  
 .....Office Hours: 9:00AM - 4:00PM Monday - Friday  
 Director of Children’s Ministries: ..... Alethea Coulter  
 Interim Director of Youth Ministries: ..... Alethea Coulter  
 Director of PromiseLand Childcare: ..... Kellianne Williams  
 Chancel Choir Director: ..... Kellianne Williams  
 Accompanist: ..... Spencer Haynes  
 Lay Leaders: Worship: ..... Steve Williams  
 Children, Youth and Families: ..... Tanya Hunt  
 Mission and Outreach: ..... Erma Perkins  
 Leadership Team: ... Kelly Barrett, Jan Funkhauser, Cindy Gray,  
 ..... Geoffrey Furman, Dan Kingsley, Michelle Prok  
 ..... Kyle Roehrig, Lisa Shingleton, Steve Williams

**Youth Group**



Youth in grades 6—12 will meet for activities a couple of times during the summer. Watch the Youth Page in the website for dates and details. All youth are welcome to come and invite a friend.

**Leadership Ministry Team**

Your comments and suggestions are always welcome by email to any Leadership Ministry Team Members, contact information on page 9. The next Team Meeting is yet to be determined.

“His Faithful Followers” is a monthly publication of the Rush United Methodist Church; 6200 Rush Lima Road; PO Box 49; Rush, NY 14543-0049; Pastor: Kyle Roehrig; Editor: Barb Kingsley; Deadline for articles to be included in the August 2024 issue is 5PM, Thursday, July 18, 2024.